



**MAXITOO**  
**MINING**

## **MILL RELINING**

**A MAXITOO GROUP COMPANY**



**Certainty in Safety – Certainty in Quality – Certainty in Value**





## MAXITOOL MINING THE SMART MAINTENANCE SOLUTION

### Introduction

Maxitool was founded in 2007 by a number of key personnel who have extensive experience in providing services to the resources sector, particularly process plant maintenance, outages and managed services.

We pride ourselves on being a diverse maintenance and repair specialist providing first-class services internationally and throughout Australia and have an uncompromising commitment to excellence in every area of operation which underpins how we do business and continues to help us grow into a respected service provider.

### Safety Culture

The safety and well-being of all personnel associated with Maxitool forms the most important of the 3 pillars of our Mission and is critical to our business.

“Safe Work” is a culture promoted by all at Maxitool and is supported by robust systems and processes that have been tailored to the type of work we do. This approach has enabled us to achieve an excellent safety record in what can be considered a high risk environment.

### Continuous Improvement

Maxitool embraces a “continuous improvement culture” based on Kaizen ideals, supported by a structured system and process, to relentlessly pursue improvement in productivity and operational excellence in order to continue to be successful and remain competitive. We at Maxitool share these ideals and look forward to partnering with like-minded clients.

**We Are**  
*Industry  
Leaders*

**We Do**  
*Detailed  
Reporting*

**We Offer**  
*Training  
Packages*

**We Can**  
*Design, Engineer  
and Fabricate*

- ◆ **Industry Leaders**  
With 70+ years of combined mill relining experience, along with our extensive long-term pool of qualified and experienced personnel of all skill classifications (domiciled throughout the Australasian region), we are leaders in providing mill relining specialist solutions.
- ◆ **Detailed Reporting**  
Effective project tracking is critical to the execution of shutdown plans. Our proven systems and processes enable us to track progress in detail, offer live reporting and produce reports throughout each critical stage, which sets us apart from our competitors.
- ◆ **Mill Relining Training**  
We have a structured training program for our Reline Technicians including Certificates of Attainment I, II and III in Mill Relining, Inductions, Working in Confined Spaces, Working at Heights, Liner Handler Operations, LRT Operations, Risk Assessment, Torqueing of Bolts and Management and Supervision.
- ◆ **Designing, Engineering and Fabricating**  
We actively develop tooling and equipment that facilitate safer and more efficient reline processes. Maxitool Engineering enable us to supply specialist tooling and lifting equipment which is designed, manufactured and certified to a high standard.

# MAXITool MINING MILL RELINING SOLUTIONS



## Specialist Services

The relining of SAG mills, ball mills, verti mills, grinding mills and scrubbers are our specialty.

Our teams have extensive experience servicing all types of mills and lining systems and are able to undertake backing rubber and shell repairs.

We are equipped with a self-contained diesel driven 40,000 psi D-115 Ultra BOSS Water Blaster for all high pressure water blasting tasks such as removing perished backing rubber in preparation for the installation of replacement backing.

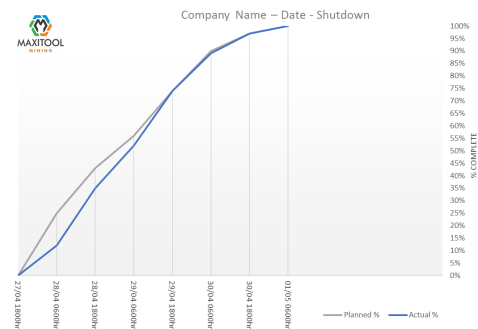
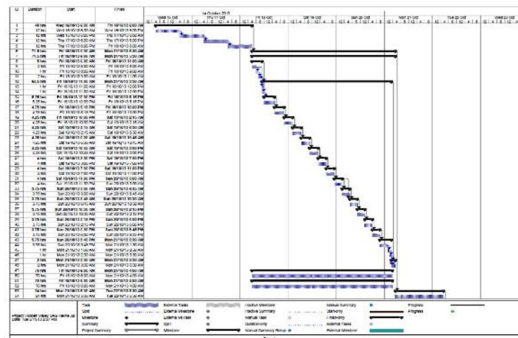
## Team Work

Successful outcomes are the result of collective effort. Whether it be operational issues, conflicting work or required design changes, we endeavour to work with all stakeholders including the plant owner, other maintenance providers and the liner component supplier to deliver an optimal outcome.

## Planning

Once the scope of work has been finalised for a project we generate a detailed plan (Gantt chart) which is presented to the client for their consideration and comment.

Once all parties agree, this plan becomes the guiding document for the execution of the project.



## Maintenance and Project Services

Specialising in the delivery of site-based services with a focus on plant outages, specific capabilities include:

Mill Relines  
Crusher Repairs and Maintenance  
Apron Feeder and Tub Repairs and Maintenance  
New Installations and Modifications

General Plant Maintenance  
Labour - Trades and Technicians  
Labour - Technical Professionals  
Commissioning/Decommissioning



## Equipment Manufacture and Engineering Services

We work very closely with our sister company to offer a uniquely complete service. Maxitool Engineering specialise in the design and manufacture of specialist mill relining tools and equipment. Specific capabilities include:

Design and Manufacture Mill Reline Machines  
Design and Manufacture Liner Bolt Torqueing Equipment  
In-house 2D & 3D Drafting

NC Milling and Turning  
Mechanised and Coded Welding  
Crane Equipped Workshop for Equipment Repairs and Modifications

## People

We can assist with resource industry personnel in the following classifications:

Technical Trades  
Engineers  
Outage and Maintenance Planners

Project Managers  
Commissioning Engineers and Technicians  
Process Plant Operators

All candidates for placement undergo a detailed vetting process to ensure they are compliant and fit for work. This includes thorough reference checking, medical assessment and screening.









#### HEAD OFFICE

A 72-74 Swallow Road, Edmonton Qld 4869

P +61 7 4045 3433

 [mining@maxitool.com.au](mailto:mining@maxitool.com.au)

 [www.maxitool.com.au](http://www.maxitool.com.au)

#### NSW BRANCH

A 23 Saleyards Road, Parkes NSW 2870

P +61 2 6863 5554



*Industry leaders in mill relining services*

**Certainty in Safety – Certainty in Quality – Certainty in Value**